



Introduction

We have some exciting news about our investment in new products and services to share with you in this issue of SmartTorque. First of all we are proud to be launching our new range of H Series Metastream™ couplings – the culmination of over 12 months work. Also, we are making our bespoke coupling design programme Metadraw, developed in the US, available globally. Both these innovations are indicative of our commitment to continuous improvement to our products and services.

In this issue we are also highlighting the successful role played by Metastream™ M Series couplings in the successful exploitation of the Canadian oil sands as well as highlighting how customers can save money with some practical advice on balancing couplings.

As always, we welcome your feedback on the newsletter and any ideas you have for stories you would like to see in the future. For comments and enquiries please email metastream@johncrane.com. Also, feel free to forward this newsletter to colleagues you think will find it useful. They can subscribe for future copies at www.johncrane.com or by clicking [here](#).

Peter Simpson, Product Manager, Couplings, John Crane EAA



John Crane launches new range of high performance couplings

John Crane has launched a new range of advanced, high performance couplings for the turbo-machinery market. The new H-Series range has been developed as part of John Crane's continuous improvement process, which has seen a complete overhaul of the Metastream™ high performance couplings range over the past 12 months.

Pete Simpson, product manager, couplings, explains: "Our Metastream™ range has served the turbo-machinery industries well for more than 20 years. We have now invested significantly in time and facilities to ensure that our new range of light weight, high performance couplings is the best available in the marketplace today." [More details from...](#)

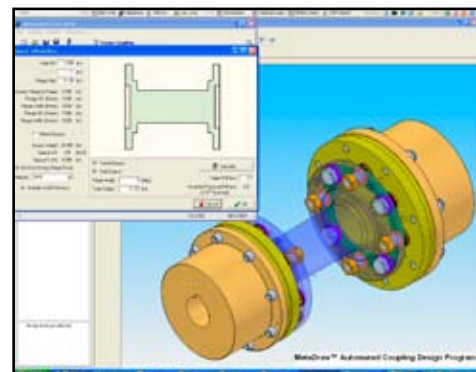


Introducing MetaDraw™ Automated Coupling Design Program

John Crane is pleased to announce the introduction of its new automated Metastream™ coupling design program - MetaDraw™.

Using sophisticated parametrics, MetaDraw™ is an automated programme capable of generating both general arrangement and manufacturing drawings from minimal customer-related application data.

Already successfully operating in the United States, MetaDraw™ is to be released globally throughout John Crane ensuring standardisation of Metastream™ coupling designs, drawing structure, and increasing efficiency. [More details from...](#)



John Crane takes the heat

John Crane's Metastream™ couplings are proving their worth in the extreme conditions of the oil sands region of Northern Alberta, Canada.

Metastream™ M Series were installed in the pioneer days of oil sands development and in the past 30 years the installed product base has grown significantly. Today the Metastream™ T Series range of API 610 and API 671 couplings are designed for infinite life and offer possibly the best technology available for the full and diverse range of applications in the oil sands upgrading, refining and pipeline industries. [More details from...](#)



A guide to balancing couplings

Balancing couplings is not something that John Crane recommends for the majority of applications. This is down to the fact that John Crane's Metastream couplings are more than capable of meeting industry standards without any further adjustments.

Peter Carlisle, John Crane EAA Director of Coupling Engineering, explains how the design and manufacture of John Crane couplings meet API standards for reducing vibrations and indeed, how the demand for balanced couplings can result in unnecessary costs for customers.

[More details from...](#)

